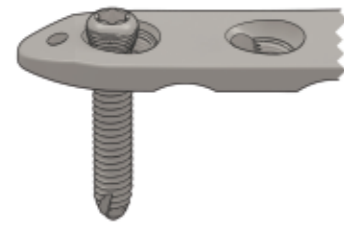


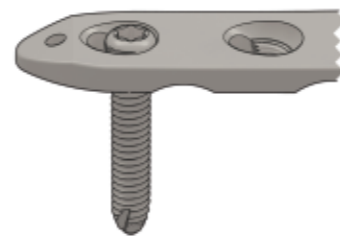
Features :



1. Low profile design of plate and screw minimizes the soft tissue irritation.
2. Highly polished surface and rounded edges minimize the potential tendon adhesion.
3. Locking and compression function can be achieved simultaneously by a locking-compression hole.

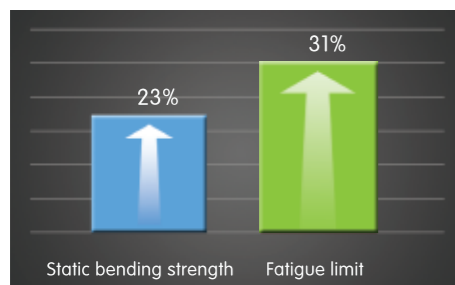


Compression function works



Locking function works

4. Compared with traditional locking-compression design, our plate obtains better mechanical properties.



5. A fixed-angle construct is created by such locking system to support articular surface and reduce bone grafting possibility.

6. Anatomical design makes optimal fit in bone.

7. Our products are manufactured using one or more of the following materials: commercially pure titanium(ISO 5832-2, ASTM F67),Ti6Al4V alloy(ISO 5832-3, ASTM F1472).

Small T-Plates (head holes 3)

Hole No.	3-8
----------	-----

Small T-Plates (head holes 4)

Hole No.	3-8
----------	-----

Oblique Radius T-Plates

Left or right	Hole No.
L	3-8
R	3-8

Proximal Dorsal Ulna Plates

Left or right	Hole No.
L	4-14
R	4-14

Proximal Dorsal Ulna Plates II

Hole No.	3-6
----------	-----

Distal Medial Humeral Plates

Left or right	Hole No.
L	3-15
R	3-15

Distal Posterior/Lateral Humeral Plates

Left or right	Hole No.
L	3-14
R	3-14

Proximal Lateral Humeral Plates

Left or right	Hole No.
L	4-16
R	4-16

Proximal Lateral Humeral Plates II

Hole No.	3-12
----------	------

Clavicle Diaphysis Plates

Left or right	Hole No.
L	6-12
R	6-12

Superior Anterior Clavicle Plates

Left or right	Hole No.
L	6-8
R	6-8

Superior Anterior Clavicle Plates II

Left or right	Hole No.
L	3-9
R	3-9

Clavicle Hook Plates

Left or right	Hole No.
L	4-7, M=15
R	4-7, M=15
L	4-7, M=18
R	4-7, M=18

Clavicle Hook Plates II

Left or right	Hole No.
L	4-7, M=15
R	4-7, M=15
L	4-7, M=18
R	4-7, M=18

Distal Lateral Fibular Plates

Left or right	Hole No.
L	3-12
R	3-12

Distal Lateral Fibular Plates II

Left or right	Hole No.
L	3-11
R	3-11

3.5 Distal Medial Tibia Plates

Left or right	Hole No.
L	4-14
R	4-14

3.5 Distal Medial Tibia Plates II

Left or right	Hole No.
L	4-14
R	4-14

3.5 Distal Tibia T-Plates

Left or right	Hole No.
L	3-15
R	3-15

3.5 Distal Lateral Tibia Plates

Left or right	Hole No.
L	4-20
R	4-20

3.5/4.5 Proximal Lateral Tibia Plates

Left or right	Hole No.
L	4-16
R	4-16

3.5 Proximal Lateral Tibia Plates

Left or right	Hole No.
L	4-16
R	4-16

4.5 Proximal Lateral Tibia Plates

Left or right	Hole No.
L	4-16
R	4-16

3.5 Proximal Medial Tibia Plates

Left or right	Hole No.
L	4-10
R	4-10

4.5 Proximal Medial Tibia Plates

Left or right	Hole No.
L	4-10
R	4-10

3.5 Posteromedial Proximal Tibia Plates

Hole No.
1-10

Distal Lateral Femur Plates

Left or right	Hole No.
L	6-14
R	6-14

Proximal Lateral Femur Plates

Left or right	Hole No.
L	4-13
R	4-13

Proximal Lateral Femur Plates II

Left or right	Hole No.
L	3-12
R	3-12

130° DHS Plates

Hole No.
2-20

135° DHS Plates

Hole No.
2-20

140° DHS Plates

Hole No.
2-20

DHS Stabilization Plates

L
131

Calcaneal Plates

Left or right	Length
L	51, 60, 68mm
R	51, 60, 68mm

3.5/2.7 Wrist Fusion Plates

Type
Standard Bend
Short Bend
Straight

1/3 Tubular Plates

Hole No.
4-14

Ulna Radius Straight Plates

Hole No.
4-14

Humerus Straight Plates

Hole No.
4-14

Tibia Straight Plates

Hole No.
4-18

Femur Straight Plates

Hole No.
6-18

Femur Curved Plates

Hole No.
6-18

3.5 Metaphyseal Plates

Hole No.
6-18

4.5/3.5 Metaphyseal Plates

Hole No.
8-20

3.5 Reconstruction Plates

Hole No.
4-16

3.5 Reconstruction Plates II

Hole No.
4-16

3.5 Curved Reconstruction Plates

Hole No.
4-18

3.5 Curved Reconstruction Plates II

Hole No.
4-16

3.5 Curved Reconstruction Plates III

Hole No.
4-16

3.5 Curved Reconstruction PlatesIV

Left or right	Hole No.
L	10-16
R	10-16