

Ares - Locking Mini Plate systems

Features :



1. Low profile design of plate and screw minimizes the soft tissue irritation.

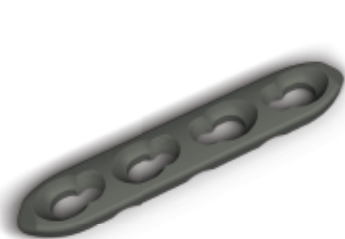
2. Highly polished surface and rounded edges minimize the potential tendon adhesion.



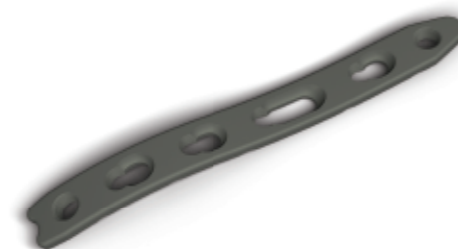
3. Anatomical design makes optimal fit in bone.

4. A fixed-angle construct is created by such locking system to support articular surface and reduce bone grafting possibility.

5. Various specifications provide options for individual needs.



6. Featured dorsal plate allows two-plate placement.



7. Our products are manufactured using one or more of the following materials: commercially pure titanium(ISO 5832-2, ASTM F67),Ti6Al4V alloy(ISO 5832-3, ASTM F1472).

2.0 Straight Plates

Hole No.	4-8
----------	-----

2.0 Reconstruction Plates

Hole No.	4-8
----------	-----

2.0 Condylar Plates

Hole No.	3-7
----------	-----

2.0 Condylar Plates II

Left or right	Hole No.
L	3-7
R	3-7

2.0 T-Plates,2 holes head

Hole No.	3-7
----------	-----

2.0 T-Plates,3 holes head

Hole No.	3-7
----------	-----

2.0 Y-Plates

Hole No.	3-7
----------	-----

2.0 H-Plates

Hole No.	4
----------	---

2.0 Distal Ulna Plates

Hole No.	6-8
----------	-----

2.4 Straight Plates

Hole No.	3-12
----------	------

2.4 Reconstruction Plates

Hole No.	4-8
----------	-----

2.4 Condylar Plates

Hole No.	3-7
----------	-----

2.4 Condylar Plates II

Left or right	Hole No.
L	3-7
R	3-7

2.4 T-Plates,2 holes head

Hole No.	3-7
----------	-----

2.4 L-Plates

Left or right	Hole No.
L	3-7
R	3-7

2.4 T-Plates,3 holes head

Hole No.	3-7
----------	-----

2.4 Y-Plates

Hole No.	3-7
----------	-----

2.4 Distal Radius Straight Plates

Hole No.	5-7
----------	-----

2.4 Distal Radius Dorsal T-Plates

Hole No.	3
	4

2.4 Distal Radius Volar Plates, 5 holes head

Left or right	Hole No.
L	3
L	5
R	3
R	5

2.4 Distal Radius Volar Plates, 8 holes head

Left or right	Hole No.
L	3-8
R	3-8

2.4 Distal Radius Volar Plates, 9 holes head

Left or right	Hole No.
L	3-8
R	3-8

2.4 Distal Radius Volar extra-articular Plates, 4 holes head

Left or right	Hole No.
L	3
L	5
R	3
R	5

2.4 Distal Radius Volar extra-articular Plates, 5 holes head

Left or right	Hole No.
L	3-8
R	3-8

2.4 Distal Radius Dorsal L-Plates, 2 holes head

Left or right	Hole No.
L	3-5
R	3-5

2.4 Distal Radius Dorsal L-Plates, 3 holes head

Left or right	Hole No.
L	3-5
R	3-5

2.4/2.7 I-Plates

Hole No.	2
----------	---

2.4 Distal Radius Dorsal Oblique L-Plates

Left or right	Hole No.
L	3
L	4
R	3
R	4

2.4/2.7 Navicular Plates

Hole No.	11
----------	----

2.4/2.7 Talus Plates

Hole No.	6
----------	---

2.4/2.7 Hind/midfoot Plates

Hole No.	5
8	

2.4/2.7 Cuboid Plates

Left or right	Hole No.
L	11
R	11

2.4/2.7 X-Plates

Type
Small
Medium
Large

2.4/2.7 Fusion Foot Plates I

Hole No.
2
4

2.4/2.7 Fusion Foot Plates II

Type
Small
Medium
Large

2.4/2.7 Fusion Foot Plates III

Hole No.	2-4
----------	-----

2.4/2.7 Fusion Foot Plates IV

Hole No.	2-4
----------	-----

2.4/2.7 Fusion Foot Plates V

Left or right	Hole No.
L	2-4
R	2-4

2.4/2.7 Fusion Foot Plates VI

Hole No.
6
7

2.4/2.7 Fusion Foot Plates VII-0°

Left or right	Type
L	Small
L	Medium
R	Small
R	Medium

2.4/2.7 Fusion Foot Plates VII-5°

Left or right	Type
L	Small
L	Medium
L	Large
R	Small
R	Medium
R	Large

2.4/2.7 Fusion Foot Plates VII-10°

Left or right	Type
L	Small
L	Medium
R	Small
R	Medium

2.7 Straight Plates

Hole No.	4-10
----------	------

2.7 Reconstruction Plates

Hole No.	4-10
----------	------

2.7 Condylar Plates

Hole No.	3-8
----------	-----

2.7 Condylar Plates II

Left or right	Hole No.
L	3-8
R	3-8

2.7 L-Plates

Left or right	Hole No.
L	3
L	4
R	3
R	4

2.7 Oblique L-Plates

Left or right	Hole No.
L	3
L	4
R	3
R	4

2.7 T-Plates

Hole No.
3
4